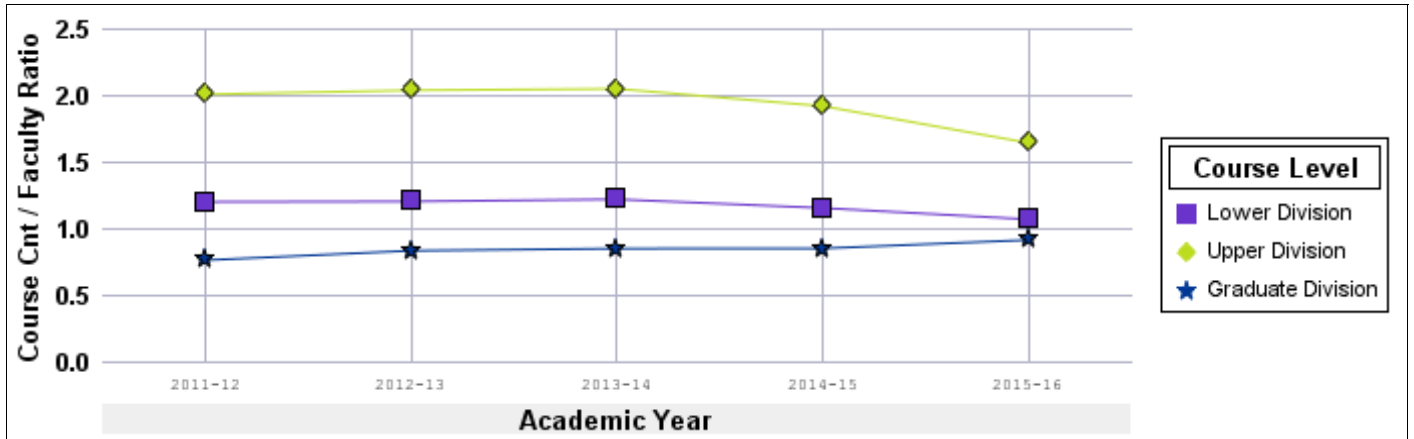


Historical Teaching Summary by Division and Course Level Course Counts per Permanent Faculty FTE

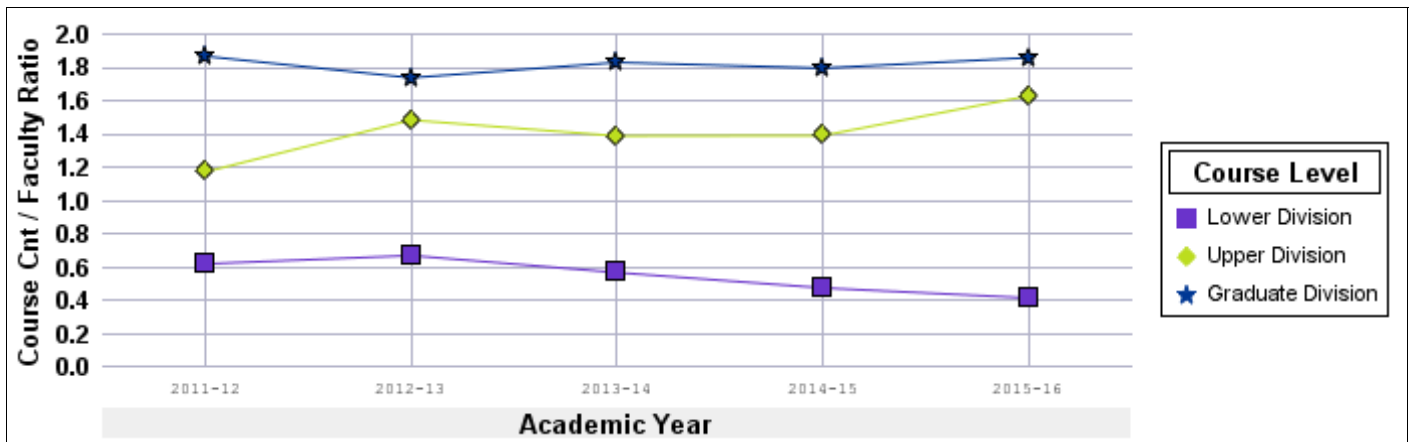
		2011-12	2012-13	2013-14	2014-15	2015-16
Arts Division	Lower Division	1.2	1.2	1.2	1.2	1.1
	Upper Division	2.0	2.0	2.1	1.9	1.6
	Graduate Division	0.8	0.8	0.9	0.9	0.9
Arts Division	Total	4.0	4.1	4.1	3.9	3.6
Baskin School of Engineering	Lower Division	0.6	0.7	0.6	0.5	0.4
	Upper Division	1.2	1.5	1.4	1.4	1.6
	Graduate Division	1.9	1.7	1.8	1.8	1.9
Baskin School of Engineering	Total	3.7	3.9	3.8	3.7	3.9
Humanities Division	Lower Division	0.8	0.8	0.8	0.9	0.9
	Upper Division	2.1	2.2	2.2	2.1	1.9
	Graduate Division	0.9	0.9	0.9	0.9	0.9
Humanities Division	Total	3.8	3.9	3.9	3.8	3.7
Physical and Bio Sciences Div	Lower Division	0.4	0.3	0.3	0.3	0.4
	Upper Division	1.3	1.3	1.3	1.3	1.4
	Graduate Division	1.7	1.6	1.6	1.6	1.5
Physical and Bio Sciences Div	Total	3.5	3.2	3.3	3.2	3.2
Social Sciences Division	Lower Division	0.4	0.4	0.4	0.3	0.3
	Upper Division	2.2	2.1	2.2	2.0	1.8
	Graduate Division	1.3	1.3	1.2	1.2	1.3
Social Sciences Division	Total	4.0	3.8	3.8	3.5	3.5
University	Total	3.7	3.7	3.7	3.6	3.5

Historical Teaching Summary by Division and Course Level Course Count per Permanent Faculty FTE

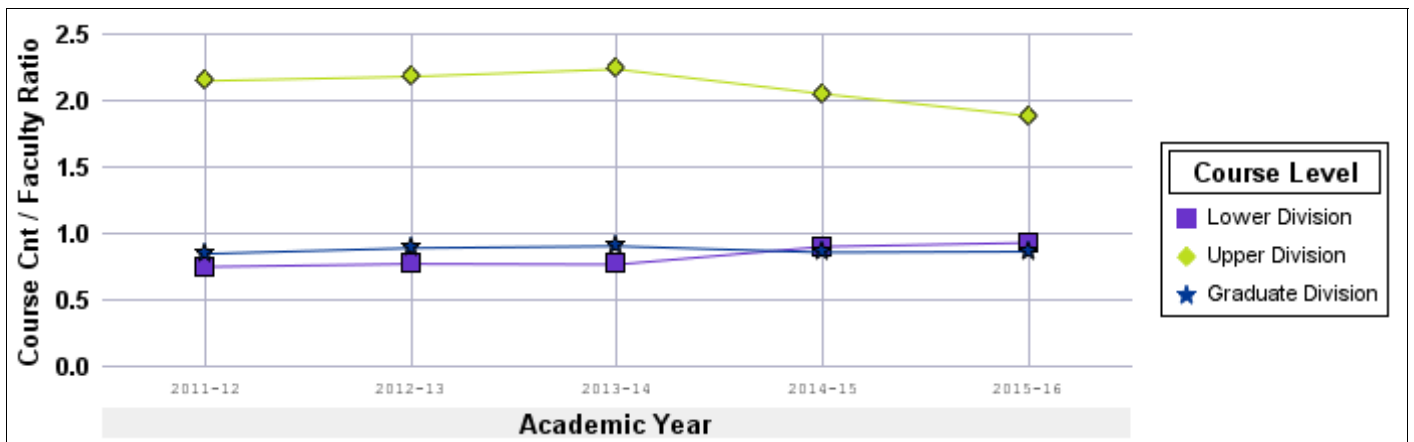
Arts Division



Baskin School of Engineering

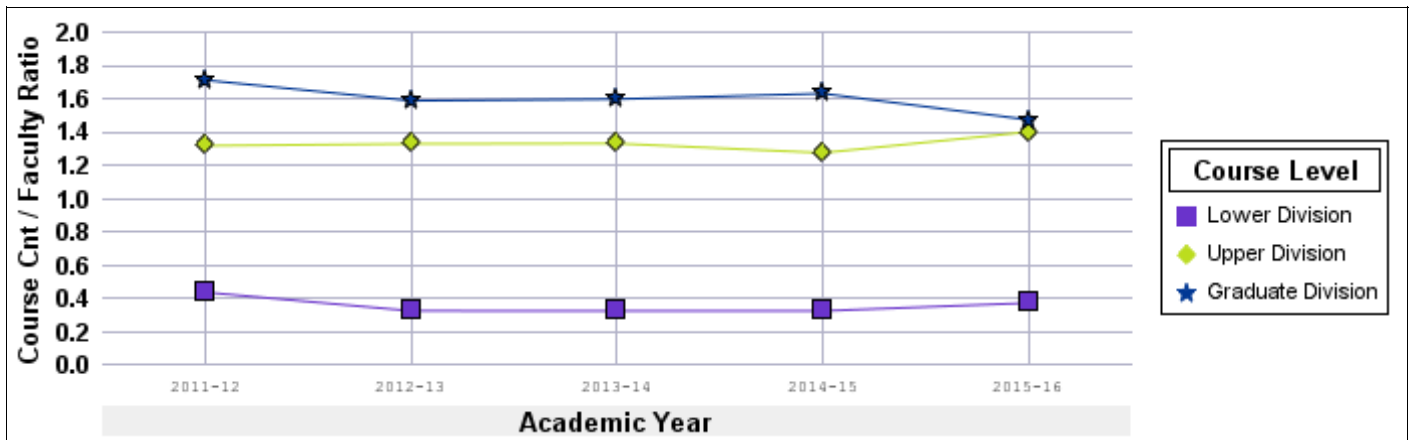


Humanities Division

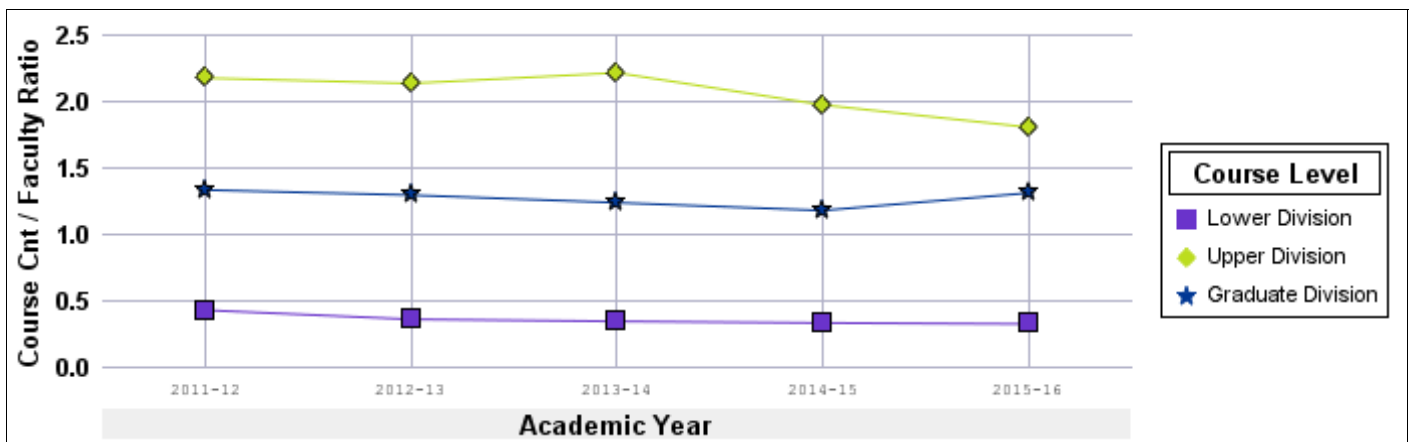


Historical Teaching Summary by Division and Course Level Course Count per Permanent Faculty FTE

Physical and Bio Sciences Div



Social Sciences Division

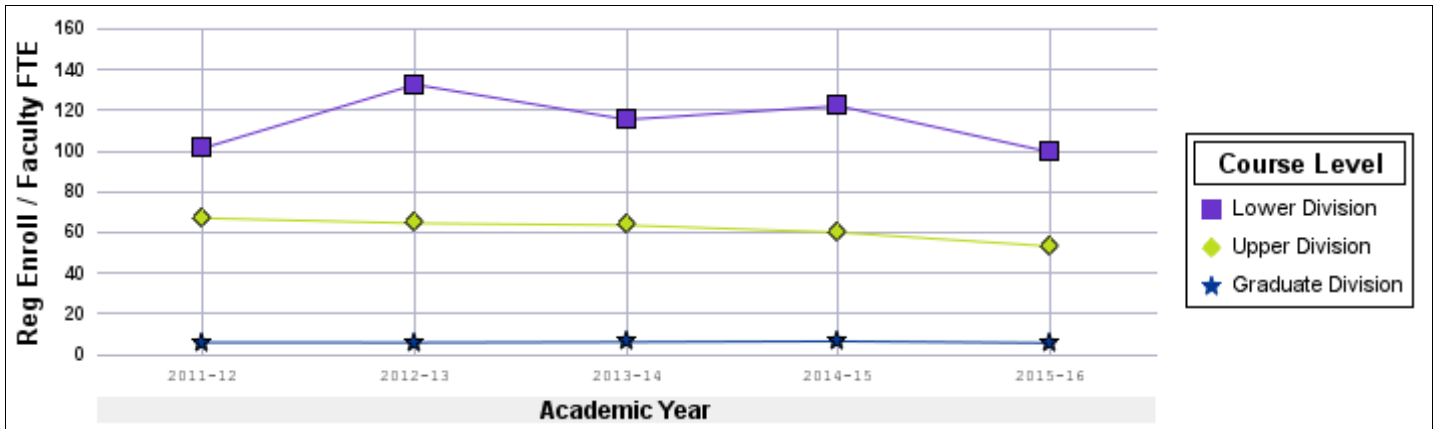


Historical Teaching Summary by Division and Course Level Regular Course Enrollment per Permanent Faculty FTE

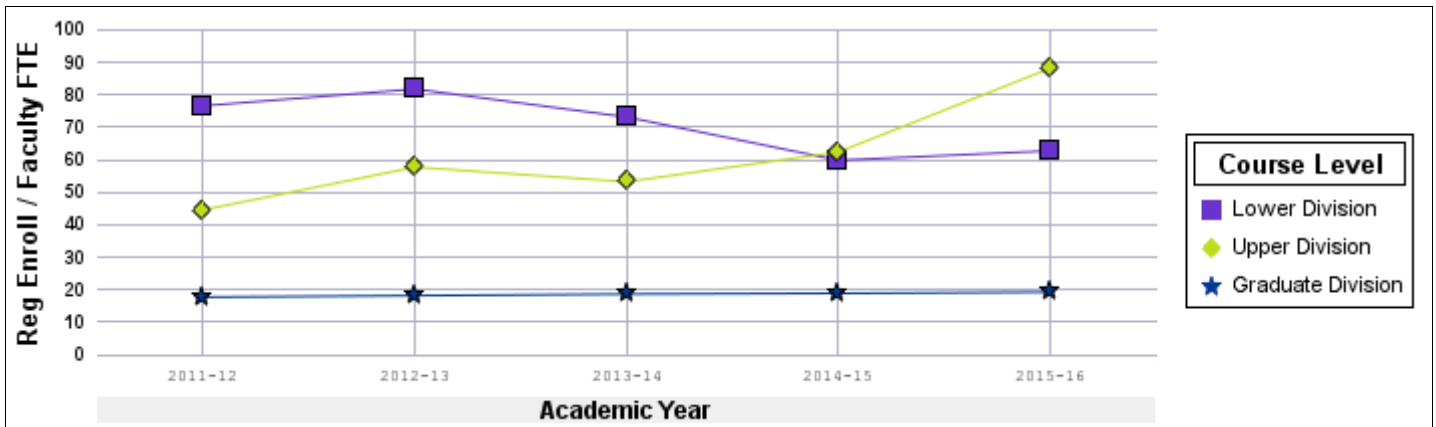
		2011-12	2012-13	2013-14	2014-15	2015-16
Arts Division	Lower Division	101.5	132.7	115.5	122.2	99.5
	Upper Division	67.0	64.5	63.6	60.0	53.2
	Graduate Division	5.9	5.9	6.1	6.4	5.7
Arts Division Total		174.4	203.1	185.2	188.7	158.4
Baskin School of Engineering	Lower Division	76.7	81.8	73.2	59.9	62.8
	Upper Division	44.6	57.8	53.3	62.5	88.3
	Graduate Division	17.7	18.2	18.7	18.9	19.3
Baskin School of Engineering Total		139.0	157.8	145.1	141.2	170.3
Humanities Division	Lower Division	71.5	64.4	59.1	70.8	75.0
	Upper Division	92.1	79.6	74.3	63.8	63.8
	Graduate Division	5.2	5.9	6.2	6.6	6.2
Humanities Division Total		168.8	149.9	139.5	141.3	145.0
Physical and Bio Sciences Div	Lower Division	81.2	66.1	56.3	64.9	73.7
	Upper Division	72.8	75.6	82.3	77.7	75.2
	Graduate Division	10.7	10.6	11.8	10.8	10.8
Physical and Bio Sciences Div Total		164.7	152.3	150.4	153.5	159.8
Social Sciences Division	Lower Division	72.7	54.0	64.3	63.9	57.5
	Upper Division	124.4	115.0	124.7	112.5	97.3
	Graduate Division	12.0	11.6	10.6	10.5	13.6
Social Sciences Division Total		209.1	180.6	199.7	187.0	168.5
University Total		173.8	165.0	164.1	162.3	160.4

Historical Teaching Summary by Division and Course Level Regular Course Enrollment per Permanent Faculty FTE

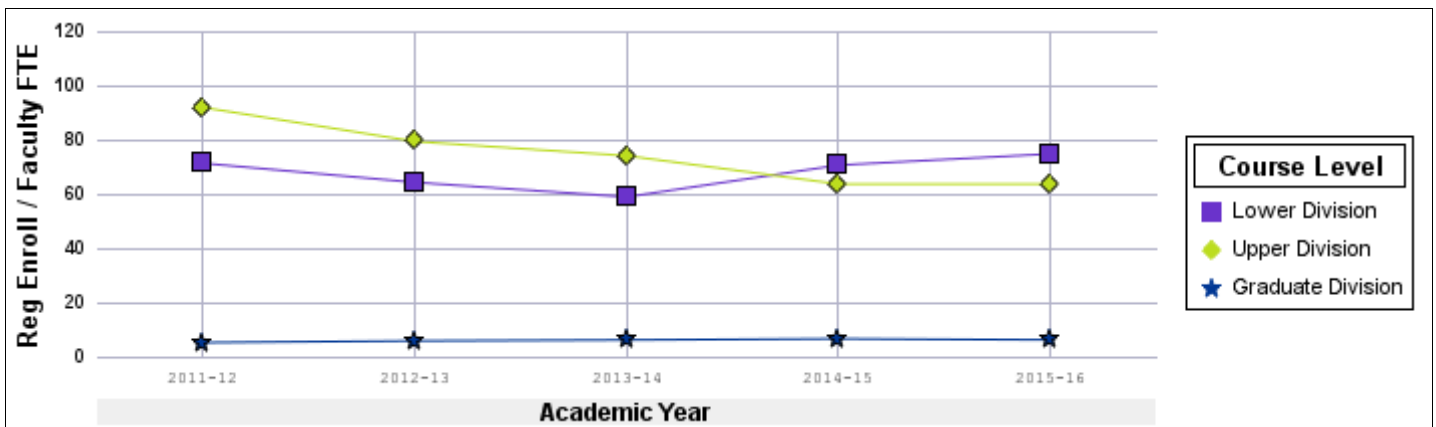
Arts Division



Baskin School of Engineering

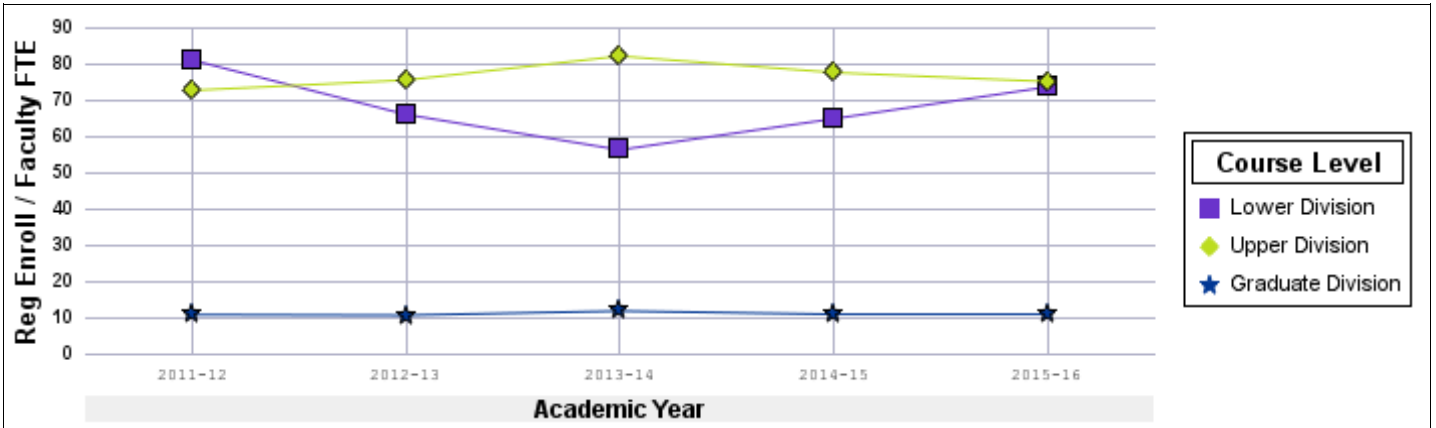


Humanities Division

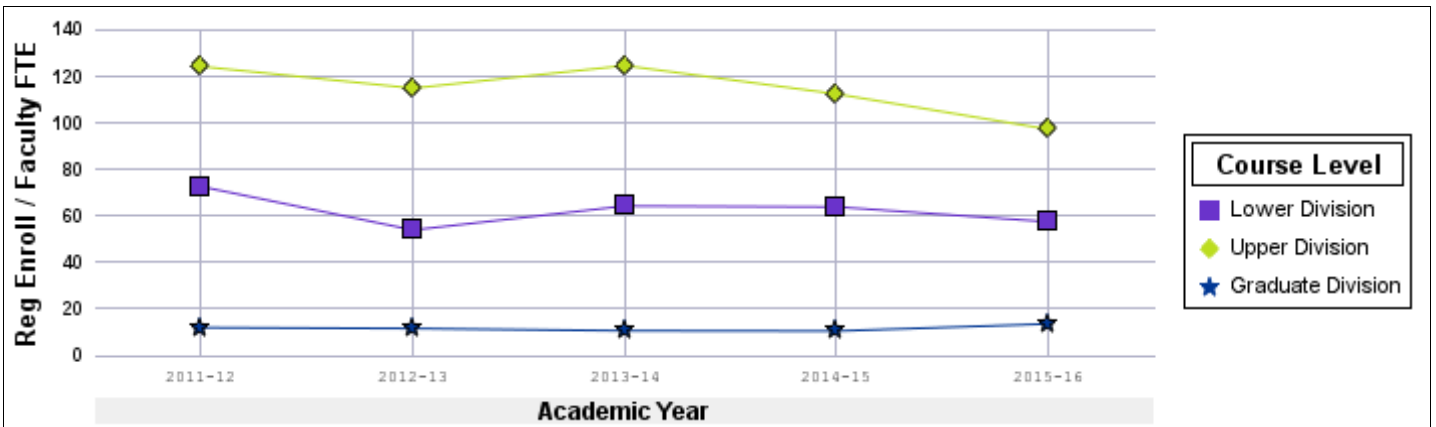


Historical Teaching Summary by Division and Course Level Regular Course Enrollment per Permanent Faculty FTE

Physical and Bio Sciences Div



Social Sciences Division

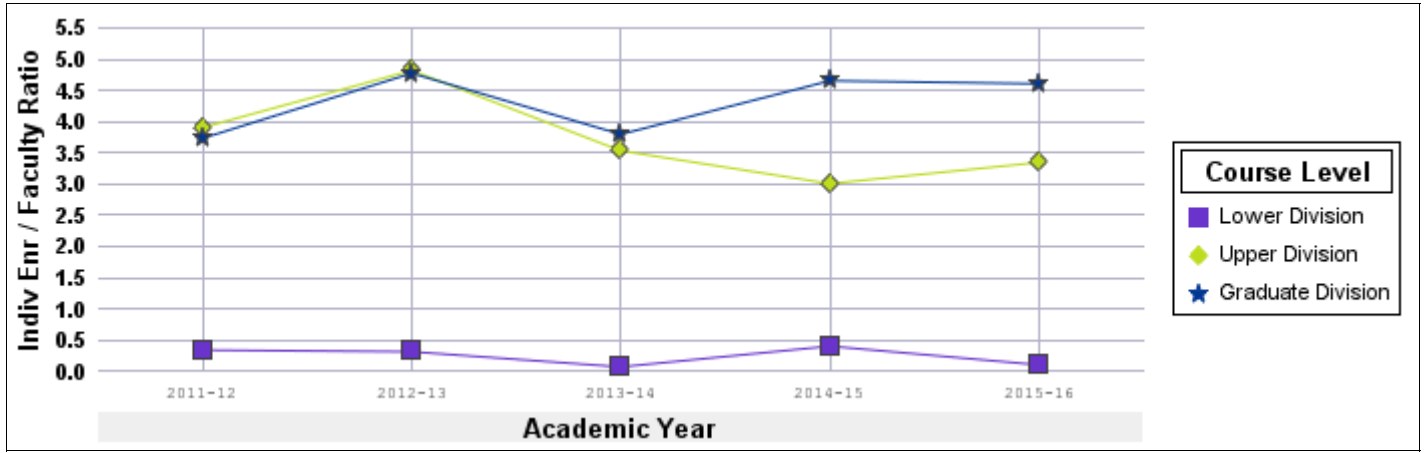


Historical Teaching Summary by Division and Course Level Individual Study Enrollment per Permanent Faculty FTE

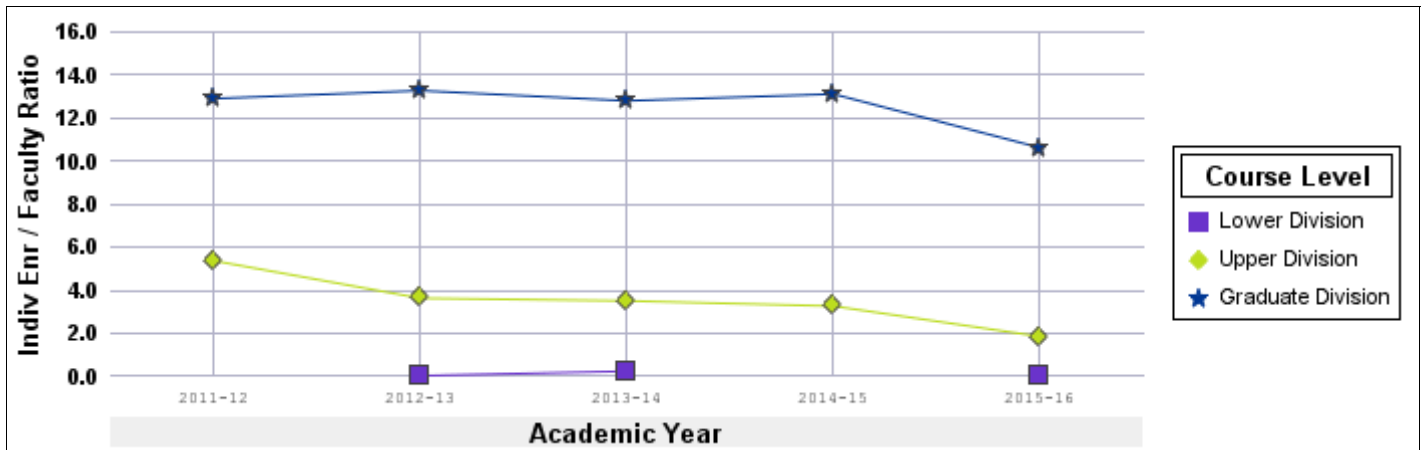
		2011-12	2012-13	2013-14	2014-15	2015-16
Arts Division	Lower Division	0.3	0.3	0.1	0.4	0.1
	Upper Division	3.9	4.8	3.5	3.0	3.3
	Graduate Division	3.7	4.8	3.8	4.7	4.6
Arts Division	Total	8.0	9.9	7.4	8.1	8.1
Baskin School of Engineering	Lower Division		0.0	0.2		0.0
	Upper Division	5.4	3.6	3.5	3.3	1.9
	Graduate Division	12.9	13.3	12.8	13.1	10.6
Baskin School of Engineering	Total	18.3	16.9	16.6	16.4	12.5
Humanities Division	Lower Division	2.7	2.6	1.8	0.7	1.1
	Upper Division	4.8	3.4	3.5	2.1	2.8
	Graduate Division	9.0	7.7	6.7	6.8	7.5
Humanities Division	Total	16.5	13.7	11.9	9.6	11.4
Physical and Bio Sciences Div	Lower Division	0.1	0.0		0.1	
	Upper Division	2.2	2.2	2.3	2.8	2.6
	Graduate Division	8.2	8.1	8.0	7.9	7.7
Physical and Bio Sciences Div	Total	10.5	10.3	10.3	10.8	10.3
Social Sciences Division	Lower Division	0.8	1.2	1.5	1.4	1.1
	Upper Division	16.9	15.9	15.1	14.5	16.6
	Graduate Division	6.1	5.9	5.6	5.5	6.0
Social Sciences Division	Total	23.8	23.0	22.2	21.4	23.6
University	Total	15.8	15.1	14.2	13.8	13.8

Historical Teaching Summary by Division and Course Level Individual Study Enrollment per Permanent Faculty FTE

Arts Division

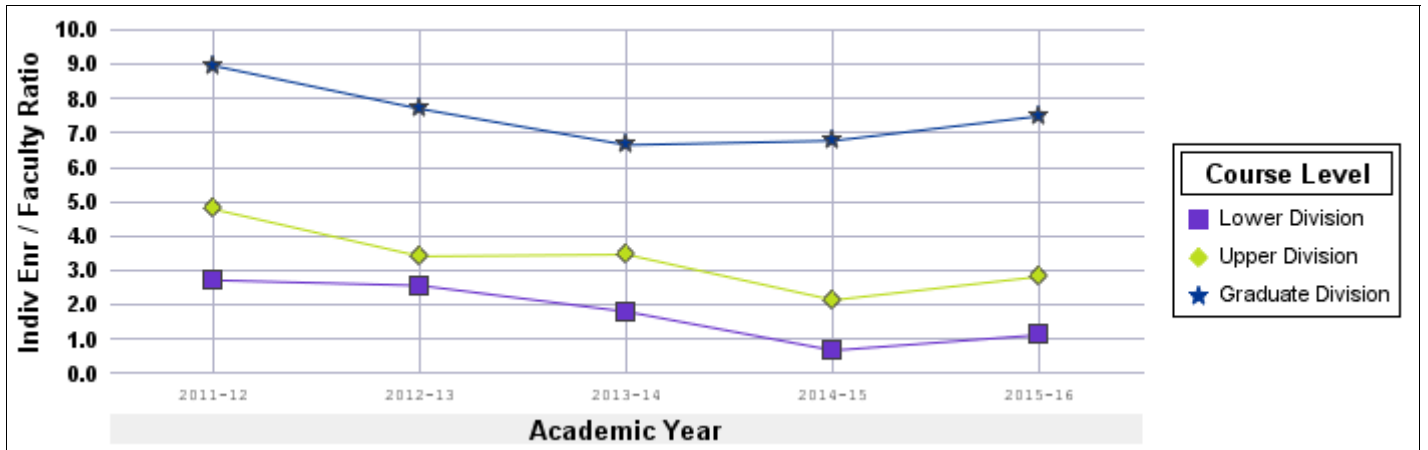


Baskin School of Engineering

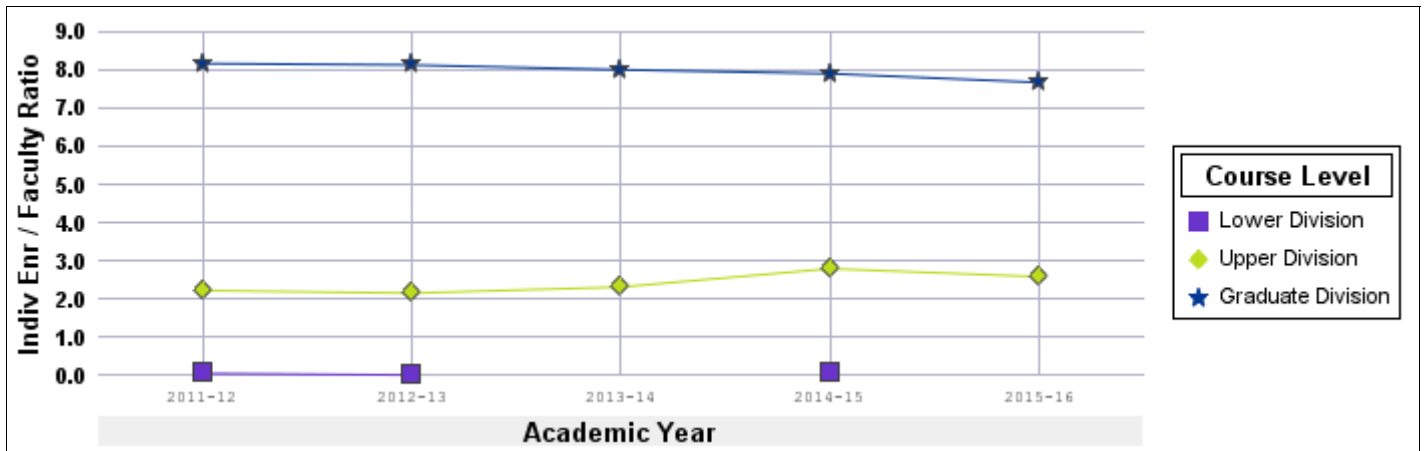


Historical Teaching Summary by Division and Course Level Individual Study Enrollment per Permanent Faculty FTE

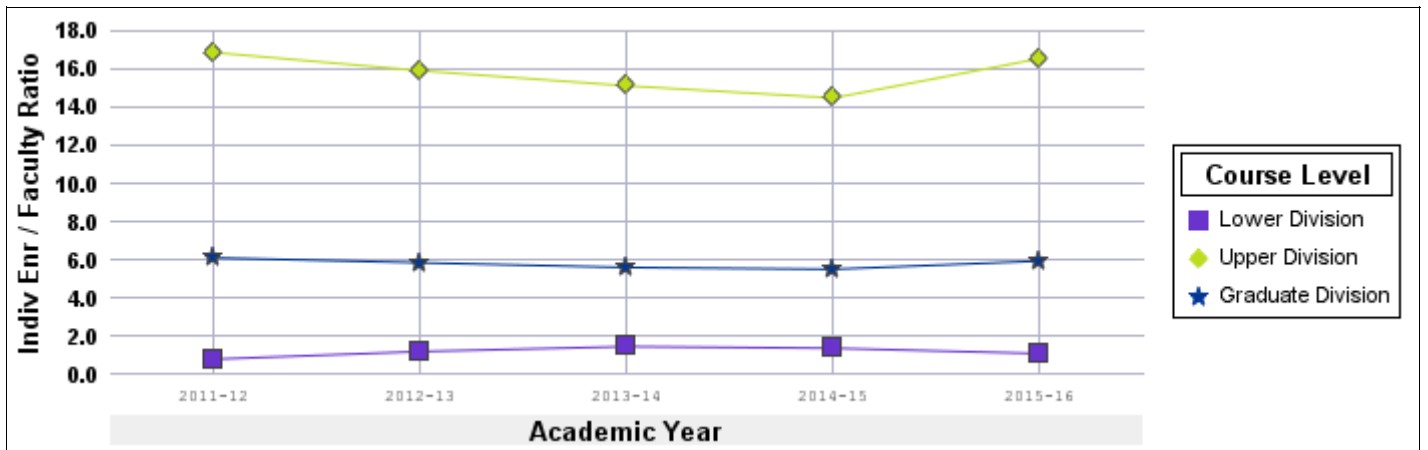
Humanities Division



Physical and Bio Sciences Div



Social Sciences Division

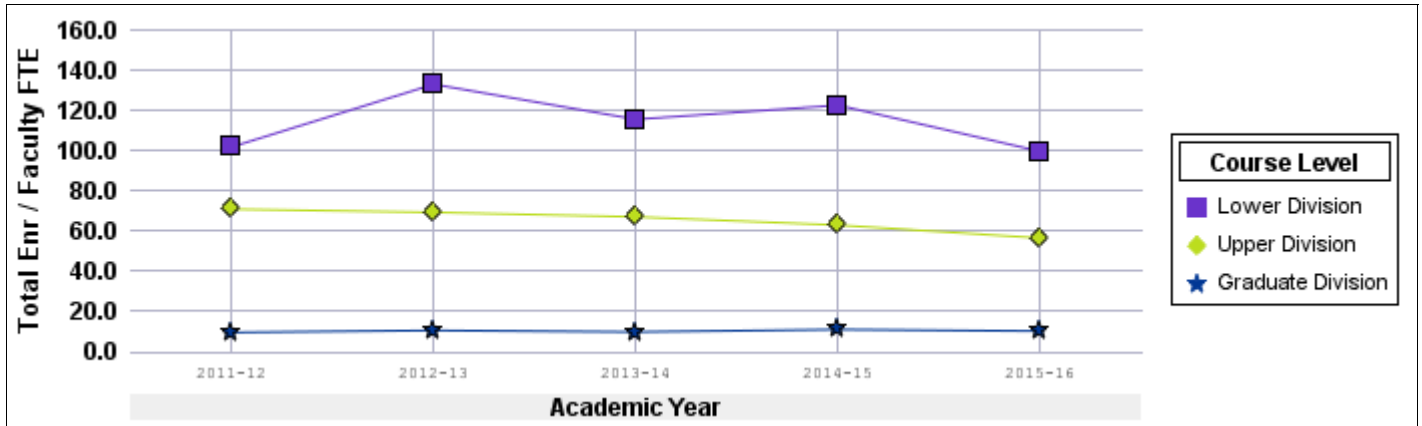


Historical Teaching Summary by Division and Course Level Total Enrollment per Permanent Faculty FTE

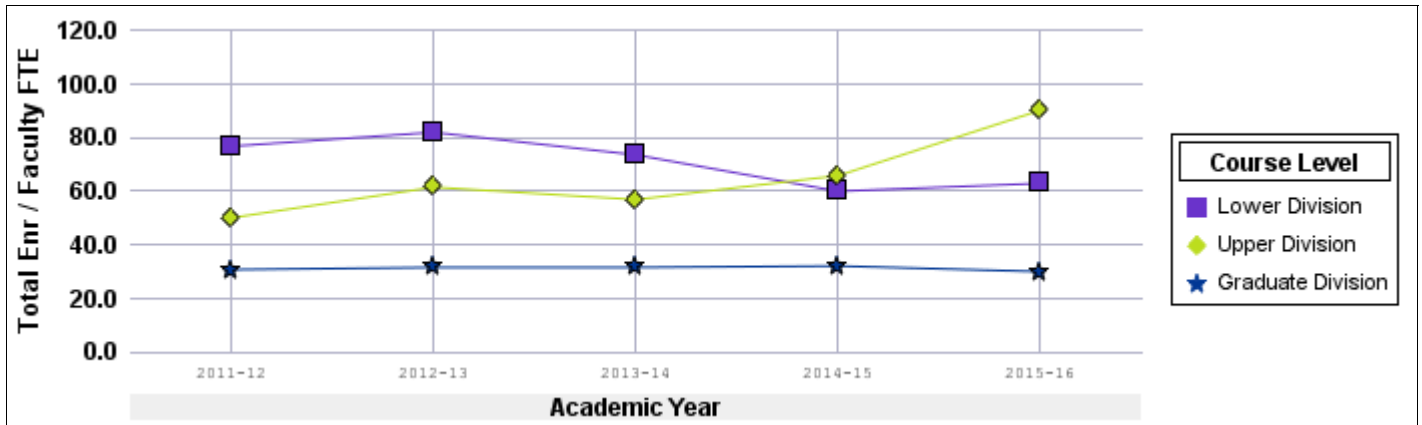
		2011-12	2012-13	2013-14	2014-15	2015-16
	Lower Division	101.8	133.0	115.6	122.6	99.6
	Upper Division	70.9	69.3	67.1	63.0	56.5
	Graduate Division	9.7	10.6	9.9	11.1	10.3
Arts Division	Total	182.4	213.0	192.6	196.7	166.5
	Lower Division	76.7	81.9	73.4	59.9	62.8
	Upper Division	50.0	61.4	56.8	65.7	90.1
	Graduate Division	30.6	31.5	31.5	32.0	29.9
Baskin School of Engineering	Total	157.3	174.7	161.7	157.6	182.9
	Lower Division	74.2	67.0	60.9	71.5	76.1
	Upper Division	96.9	83.0	77.7	65.9	66.6
	Graduate Division	14.2	13.6	12.8	13.4	13.7
Humanities Division	Total	185.3	163.5	151.4	150.8	156.4
	Lower Division	81.2	66.1	56.3	65.0	73.7
	Upper Division	75.0	77.8	84.6	80.5	77.8
	Graduate Division	18.9	18.7	19.8	18.8	18.5
Physical and Bio Sciences Div	Total	175.1	162.6	160.7	164.3	170.0
	Lower Division	73.5	55.2	65.8	65.3	58.6
	Upper Division	141.2	130.9	139.9	127.0	113.9
	Graduate Division	18.1	17.5	16.3	16.1	19.5
Social Sciences Division	Total	232.9	203.6	221.9	208.4	192.1
University	Sum:	189.5	180.1	178.3	176.1	174.2

Historical Teaching Summary by Division and Course Level Total Enrollment per Permanent Faculty FTE

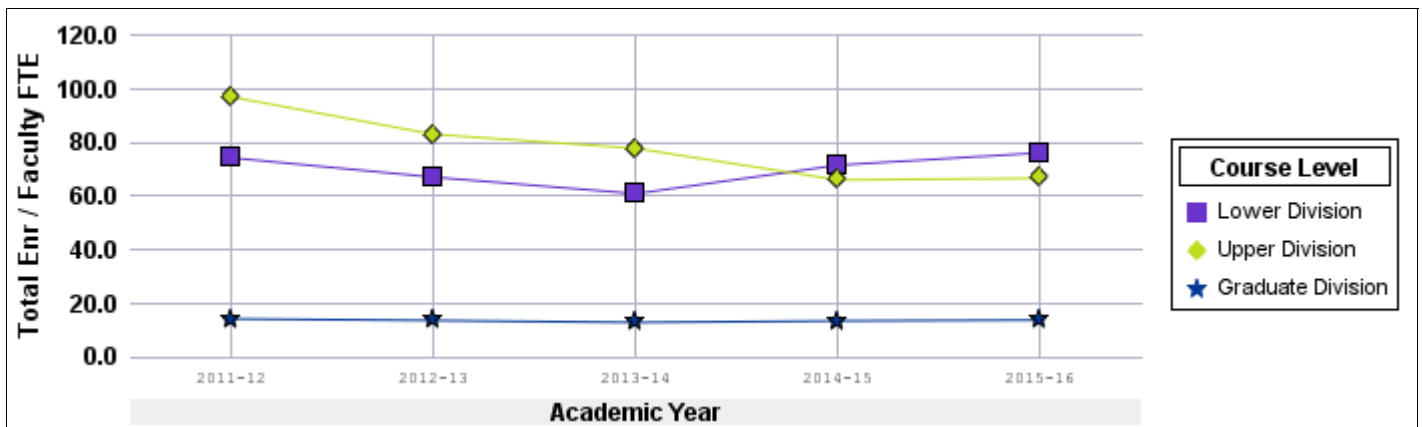
Arts Division



Baskin School of Engineering

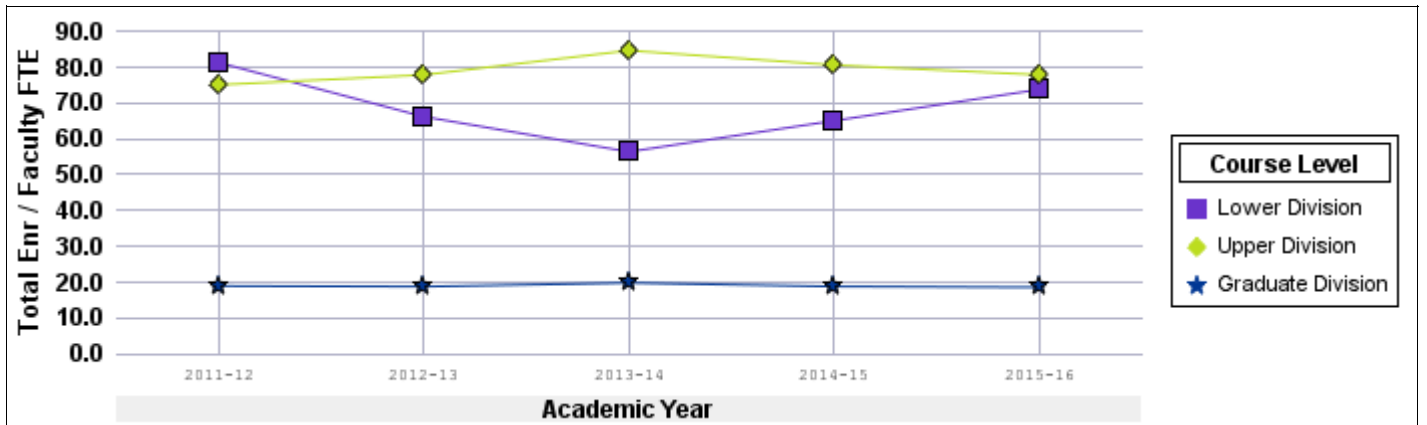


Humanities Division



Historical Teaching Summary by Division and Course Level Total Enrollment per Permanent Faculty FTE

Physical and Bio Sciences Div



Social Sciences Division

